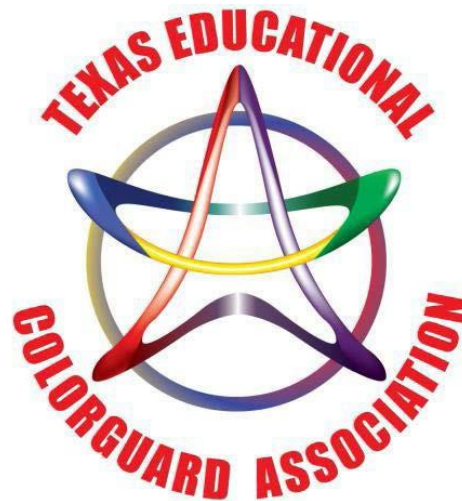




EARL WARREN HIGH SCHOOL INVITATIONAL

March 23rd, 2019



A TECA sanctioned contest hosted by:

Warren Warrior Band

**For questions contact Raul Rodriguez at 210-397-4281 or Raul.Rodriguez@nisd.net
or Christopher Drayton at 210-397-4282 or Christopher.Drayton@nisd.net**

Warren Colorguard & Percussion Showcase Information

LOCATION, DIRECTIONS AND MAP:

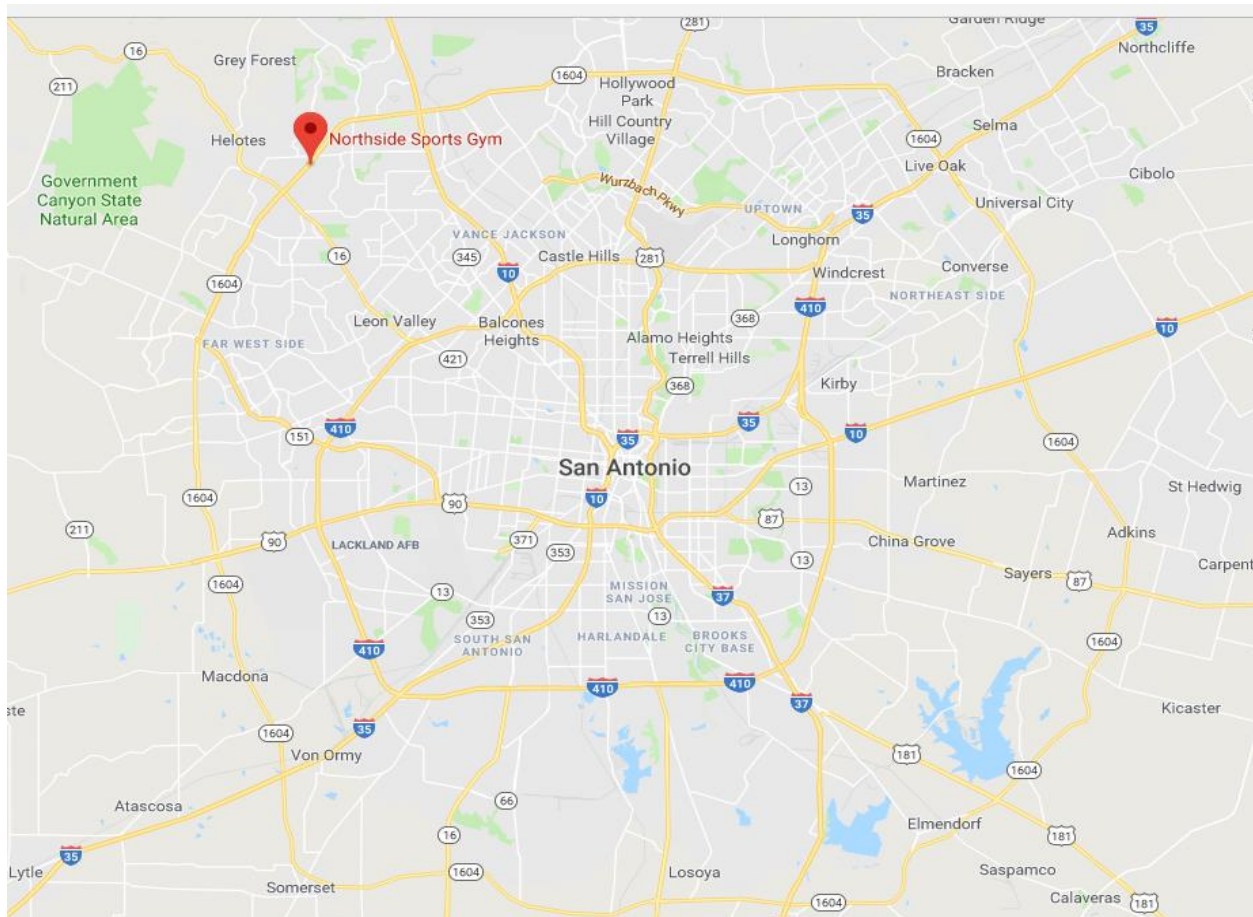
The Warren Colorguard and Percussion Showcase will be held on Saturday, March 23rd, 2019 at the **Northside Sports Gym - 8400 N Loop 1604 E, San Antonio, TX 78249**

From IH 10 E, IH 10 W, State Highway 281 S. and IH 35 S:

Take TX-1604 Loop N/W in San Antonio. Take the exit toward TX-16/San Antonio/Bandera from TX-1604 Loop. Take the turn-around at Bandera Road. The Entrance to the Northside Sports Gym will be on your right.

From IH 35 N:

Follow I-35 N and exit onto I-410 in San Antonio. Take exit 9 toward TX-151/Sea World. Drive on TX-151 and exit TX-1604 Loop N. Follow TX-1604 and exit Bandera Road. The Entrance to the Northside Sports Gym will be on your right.

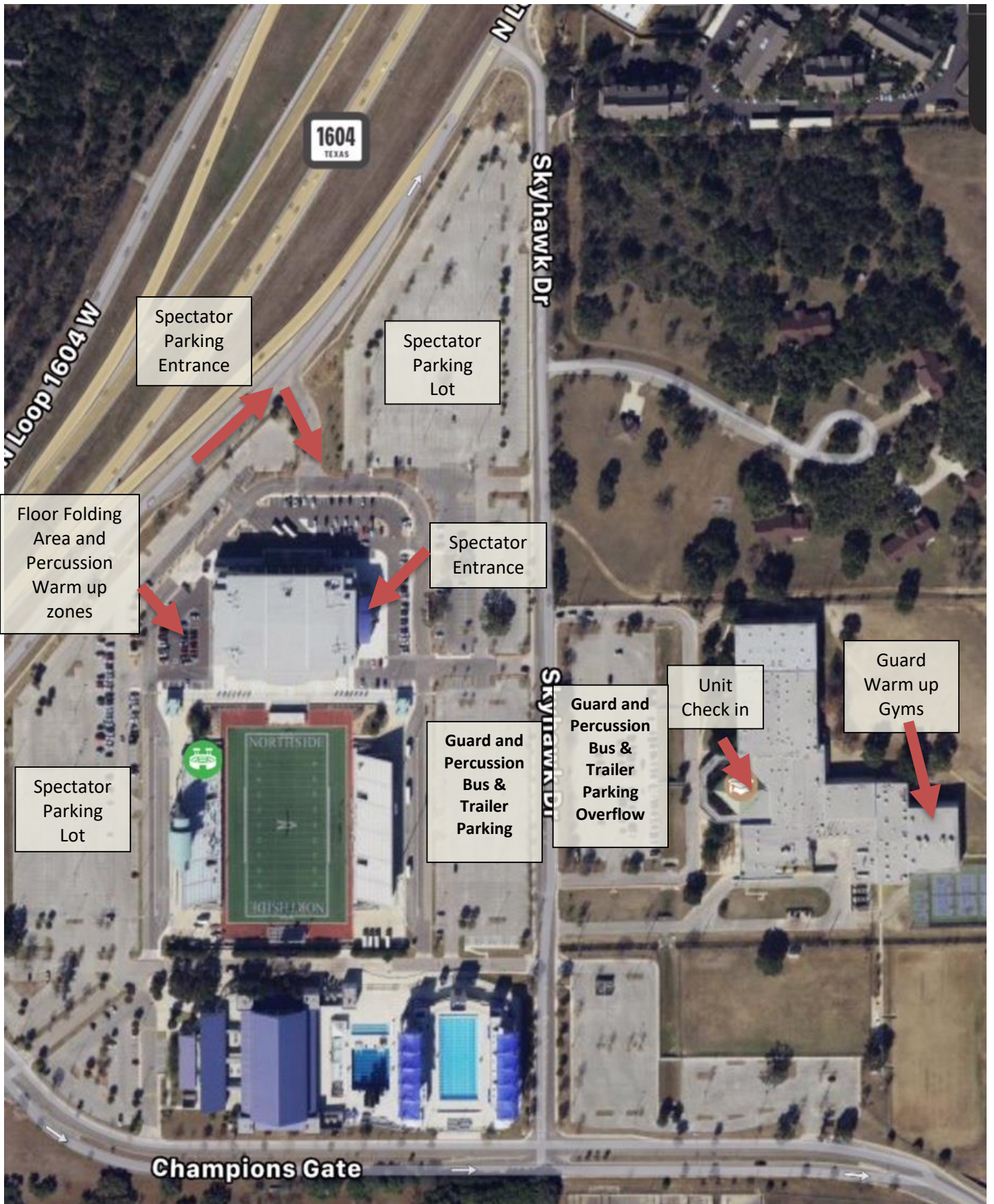


PARKING:

Buses will enter on Skyhawk Dr. and will follow police and parking attendants.

Spectators will enter on Champions Gate street or the entrance before Skyhawk Dr. (see map below)

Northside Sports Gym and Stinson Middle School Parking Map



Northside Sports Gym and Stinson Middle School Colorguard Flow Map



Northside Sports Gym and Stinson Middle School Percussion Flow



CONTEST INFORMATION

All contest rules and regulations from the 2018-2019 TECA Constitution and By Laws and the 2018-2019 WGI Rule Books will be followed.

All props, performance shoes and equipment must be padded and taped according to the TECA and WGI rule books specifications. Please refer to the 2018-2019 WGI Colorguard and Adjudication Manual and Rule Book for further information.

CHECK IN

The Check in table for guard participants will be located inside Stinson Middle School by the front entrance foyer.

Performers will show the monitors that all equipment is properly padded and taped during warm up.

Maps of the school and a schedule of performance times will be available at check in.

GUARD CREW AND STAFF ADMISSION

Performing members will need to report to the check-in table prior to warm up.

Admission bracelets will be provided for 2 bus drivers, and up to 10 student crew members.

Additional admission bracelets may be purchased at the check-in table for additional crew members at a cost of \$5 per student.

COLORGUARD AREA

Tables will be set up in the cafeteria for each group to store personal items.

Props/Floors and larger equipment will be stored in the Prop Storage Area outside of the Northside Sports Gym in the breezeway.

The cafeteria and hallways are traffic areas only. Students and staff will not spin, toss or maneuver any equipment at any time other than in designated warm up areas.

You may use the area outside the check-in area for extra equipment warm up area.

*****After Performance, units will need to change and remove all items from the cafeteria and store on your bus or trailer. There will be no storing bags, clothing, uniforms equipment in the cafeteria after your performance. If you have a special circumstance, i.e. your bus is dropping you off and leaving, please contact Raul Rodriguez – Raul.Rodriguez@nisd.net or 210-397-4281 to make arrangements *****

OFFICIAL WARM UP TIME AND PERFORMANCE

BODY WARM UP

When it is time for your group to be "READY", please report to the cafeteria. You will be escorted by a monitor from there to each warm up area.

Body warm up will be in the small gym. Students may stretch or do a body type of run through. No equipment will be allowed during this segment of the official warm up time.

A sound system will be made available to you in body warm up area.

EQUIPMENT WARM UP

After Body Warm Up, your group will be led to the warm up gym and will be placed in holding until your equipment warm up time starts.

A sound system will be made available to you in equipment warm up areas.

PERFORMANCE

After Equipment Warm Up, your group will be led to the performance area.

You will be placed in holding until your official set up and performance time begins.

We will be utilizing a **VERTICAL TIME LINE** flow for the performance area.

(See attached Gym Flow Map below)

POST PERFORMANCE

After exiting the performance area, staff and unit members should make sure that all equipment is secured and then proceed to pick up the show music.

*****After Performance, units will need to change and remove all items from the cafeteria and store on the bus or trailer. There will be no storing bags, clothing, uniforms equipment in the cafeteria after your performance. If you have a special circumstance, i.e. your bus is dropping you off and leaving, please contact Raul Rodriguez – Raul.Rodriguez@nisd.net or 210-397-4281 to make arrangements *****

Comments and score sheets will be sent electronically.

Unit Captains will need to start their line-up underneath the seating area after the last unit of each retreat block. Retreat will follow the last performing group.

Participants will be given the opportunity to attend a critique session hosted by the judges and TECA.

SPECTATOR ADMISSION

Wrist bands will be sold at the spectator entrance. All spectators must have a wrist band to enter the competition.

Admission is \$8.00 for adults and \$5.00 Student. Children under 5 are free. Cash, Check or Credit Cards are accepted. (There will be a convenience fee of 50 cents per adult tickets and 25 cents per student ticket if a Credit Card is used. This is a fee that is charged to us.)

CONCESSIONS

Concessions will be available throughout the day in the main gym on the concourse.

No outside food or drink will be allowed inside Stinson Middle School or Northside Sports Gym.

SHIRTS, SHOUT-OUTS, and FLOWERS

If you wish to show support and congratulate your participants, Shout-outs in the gym will be available for purchase \$3 for one or two for \$5. Cash only.

Roses and Carnations will be available for purchase. Roses are \$3 and Carnations are \$2. Cash only

Please make sure to bring extra money in case you are interested in purchasing any of the items listed.

Contest Shirts will also be available for purchase.

ONLINE HELP AND INFORMATION

Raul Rodriguez, Head Band Director

Raul.Rodriguez@nisd.net

Christopher Drayton, Assistant Band Director

Christopher.Drayton@nisd.net

Jeremy Contreras, Colorguard Director

jermster09@gmail.com

Additional information and help is also available on the TECA website

<http://www.go-teca.org>

TECA CONCESSION PRICE LIST

| | |
|-----------------------------|-----------|
| Hot Dog..... | \$2 |
| Chili Cheese Dog..... | \$3 |
| Nachos..... | \$3 |
| Powerade..... | \$2 |
| Water..... | \$2 |
| Soda..... | \$1 |
| Tea..... | \$2 |
| Candy..... | \$1 - \$2 |
| Chips..... | \$1 |
| Hot Cheetos and Cheese..... | \$2 |
| Frito Pie..... | \$3 |

